



MARCH MEETING—MITERED BOXES

Our next meeting on March 15th will center on making boxes but with a focus on mitered boxes. The box made in the recent Mitered Box Class will be used as an example.



Looking ahead, our April meeting topic will be hand tools. In addition to a short presentation, we will have a hands on look at the basic tools including examples from current manufacturers as well as vintage tool examples.



We will cover:

- The advantages of mitered boxes
- Tips and techniques to make the mitered box quickly, efficiently, and accurately.

Come to our next meeting and get a look at the shop improvements recently completed including power, lighting, and video upgrades.

IN THIS EDITION

“FROM THE BENCH”-Don Peterson	2
FIELD TRIP-Rice Blacksmith Shop	3-4
CLASS EVENT—Live Edge Bench	5-6
CLASS EVENT—Building a Mitered Box	7
CMWA SHOP UPGRADES	8
MIDWEST TOOL COLLECTORS SHOW	9
UPCOMING MULTI-DAY CLASSES	10
2023 UPCOMING MEETING SCHEDULE	11

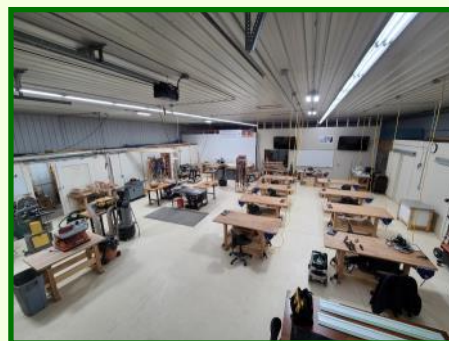


FROM THE PRESIDENT'S BENCH Don Peterson - CMWA President

It has been a busy month for the CMWA. The Live Edge Bench Class and the Mitered Box class were completed. The big news was completing the electrical work in the shop. The new outlets and cord drops mean no more extension cords and no more unplugging one piece of equipment just to plug another one in. The lighting is unbelievably better! It worth coming to the next meeting to take a look. These improvements really make the shop feel like a professional work space. See the picture below that shows the shop layout we have used for recent classes.

The Live Edge Bench Class with Grant Kaihoi was great. Rollie Johnson helped out with the class. I was able to take the class. Grant did a great job keeping us all moving along but allowing time for personal help as needed. We are talking with Grant about coming back this fall for a class.

Our March meeting topic will be on mitered boxes. This is similar to our recent class on mitered boxes including the veneered box made with Bob Van Dyke. Join us and take a look at the recent shop improvements.



Stay Safe,
Don Peterson

CMWA 2022 BOARD OF DIRECTORS

President	Don Peterson
Vice President	Mike Ross
Secretary	Shawn Jarvis
Treasurer	Kurt Zniwski
Director at Large	Tim DuBois
Director at Large	Charlie Gunderson
Director at Large	Rollie Johnson
Director at Large	Mark Voigt
Director at Large	Dan Steffens
Director at Large	Gail Ivers
Director at Large	Scott Lenzen
Director at Large	Charlie Meyer
Past President	Devin Middendorf

WEBSITE	Linda Saehr-Miller
	Cal Miller
NEWSLETTER	Tom Rosga
	trosqa@scicable.com

WANT TO CONTACT A BOARD MEMBER?

Try: cmwa.member@gmail.com



The CMWA is a group of men and women from around the St. Cloud, MN area who share a common interest in the art and business of woodworking.

We meet monthly and share information, techniques, and topics of interest in woodworking.

www.thecmwa.com

FEBRUARY –FIELD TRIP

On February 15, CMWA members ventured out to Rice, MN, where we toured the **Rice Blacksmith Saw and Machine shop**. The shop has been family-owned since 1936, when Fred Fiedler bought the property. Roman Voigt joined Fred in the early 1940's and today the shop is co-owned and operated by Roman's sons, Jim and Allen Voigt; their brother Scott works alongside them in the smith. Many of the tools used in the shop today are the originals used at the turn of the 20th century, and many others the brothers have created for themselves.

Scott demonstrated smithing and described the tools and materials that he uses and also gave us an overview of his own path to blacksmithing. Although Scott's day job typically involves repairing farming tools, he has a different passion in his free time: he creates artistic pieces, including small crosses he has blessed and then shares with people from his church community.

Jim showed us the massive industrial sawmill blades they recondition and described their composition, the kinds of saw mills that use them, and the types of repairs they can do at the shop. Although they work on saw blades from around the country, the majority of blades come from the Upper Midwest. In his spare time, Jim creates highly sought after dark house spears.

It was a great field trip for the club. It is exciting to watch people share their amazing expertise and their artistry. Thanks goes to Mark Voigt for organizing the adventure.

You can see a video of the shop and hear about its history from a piece on wjon.

<https://wjon.com/frozen-in-time-blacksmith-shop-video/>

Read more about how they recondition sawmill blades at:

https://www.farmshow.com/a_article.php?aid=25004



Saw blades ready to be repaired



Welding band saw blades

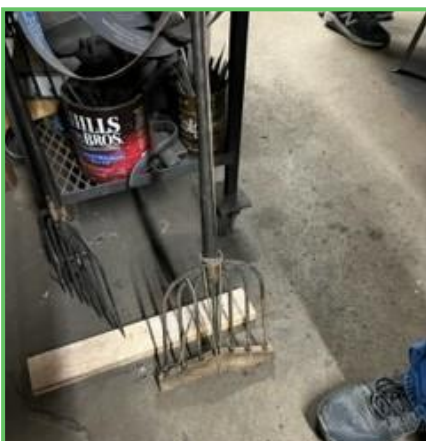


Saw blades for reconditioning

FEBRUARY –FIELD TRIP– (CONTINUED)



A cat and a mouse!



LIVE EDGE BENCH CLASS— February 25-26

Grant Kaihoi taught a Live Edge Bench Class February 25 & 26. All eight students were successful in completing their projects. Grant supplied the red oak slabs and the ash pedestals. One side of the bench is a waterfall edge, the other end of the bench is supported by an ash pedestal. The joinery was accomplished using the Festool Domino. Initial cut for the waterfall edge was made with a Festool track saw and finished using hand planes. The benches were all treated with Odie's Oil products. The blackened pieces were accomplished using a reactive finish made with a mixture of vinegar and steel wool.



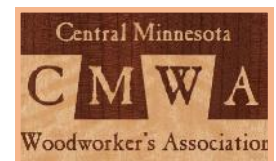
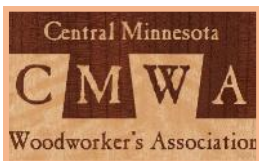
LIVE EDGE BENCH CLASS— (Continued)



MITERED BOX CLASS— March 7-8

CMWA held a Mitered Box Class with four students attending the event. The class was taught by Don Peterson and Tim DuBois. This two evening class covered shop safety, use of the table saw, and router table, as well as detailed instructions on building a mitered box.

The box was constructed using quartersawn walnut with a walnut plywood bottom. The top was a Kumiko panel as was made in the February Kumiko class. The panel was custom fit into the box top and backed with a translucent paper. The box has a lift off top accomplished with two cuts made before the box is assembled, then cut apart after assembly.

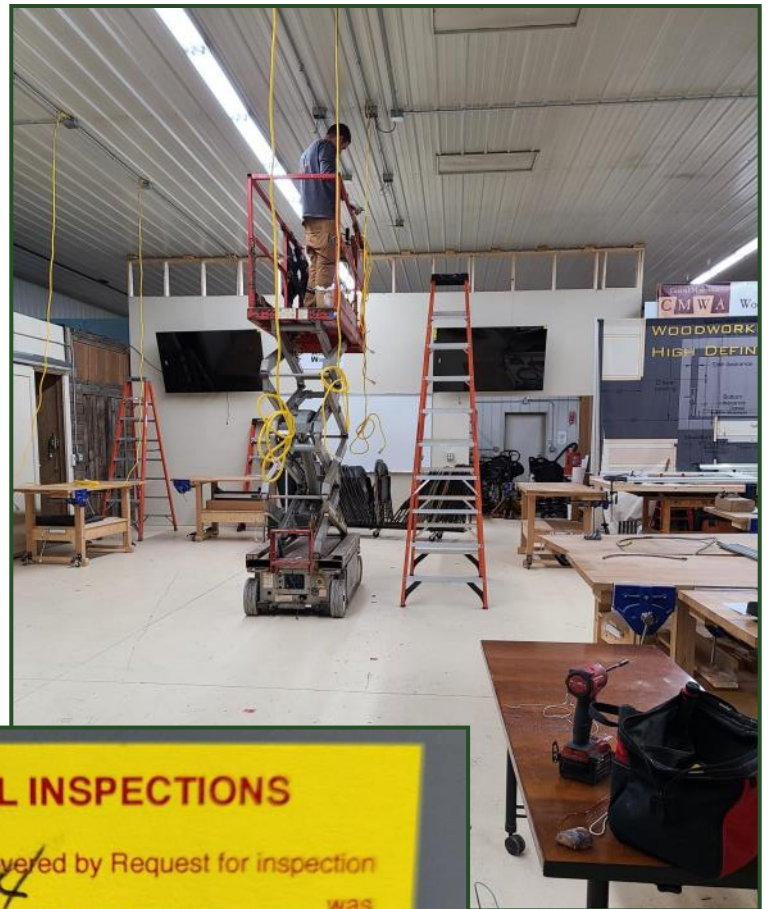




CMWA SHOP ELECTRICAL UPGRADE



After attempting to start this project for several years, the electrical upgrade work we have needed in the shop is finally complete. We passed the required electrical inspection on March 8. Greg Bednark of **Bednark Electric** did the job based on our plan. We now have separate circuits and outlets for all our 220V machinery. We have also added another four 120V circuits to support the display wall and other loads. The lighting has been substantially improved with the addition of five LED fixtures. Cord drops were added to support powering the benches or lathes. Thank you Greg for a great job!



ELECTRICAL INSPECTIONS

The electrical wiring covered by Request for inspection # 6494 was inspected on 3-8-23

Remarks 80213 Cord Drops

CAUTION: Wiring installed after this date or alterations made to the wiring existing on this date may create a hazardous condition.

ELECT. INSPECTOR [Signature]

DO NOT REMOVE

MIDWEST TOOL COLLECTORS ASSOCIATION

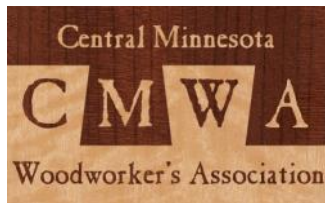
By Don Peterson

I attended the Midwest Tool Collectors “Cabin Fever” tool sale event on February 12th. This annual event is held at the Medina Entertainment Center. It attracts a large crowd of shoppers and sellers. If you have any interest in vintage tools this is the place to go. Membership is required to attend. Annual dues are \$25. For that you receive the “Gristmill” magazine published quarterly and you are able to events like this one. We are lucky in Minnesota that there is a similar event held May 13 in Hastings. I always see Kurt Zniwski attending this event. And our fellow CMWA member Jim Preusser, displayed a table full of tools with some of them also for sale. The display, pictured here, was “The Art of the Blacksmith”. You can find them online at mwcca.org.



Here is a picture of what I walked away with this year. A Stanley Sweetheart drill, a Yankee screwdriver, and a 1/2” Buck Chisel.





THE CENTRAL MINNESOTA WOODWORKER'S ASSOCIATION

in partnership with the

PARAMOUNT CENTER FOR THE ARTS

is offering the following classes for 2023.

CLASS SCHEDULE

All classes and events are held at the Paramount Tech Center

248 33rd Ave South

Waite Park, MN 56387

Registration is open for classes listed on the Paramount web site. Follow the link below to see the listings for all upcoming Paramount classes that are organized by the month.

<https://paramountarts.org/calendar/>

THE JOY OF WOODWORKING WITH MARK VOIGT

Three Mondays April 10, 17 & 24, 2023, 6pm to 9pm

Instructor—Mark Voigt

Fee: \$135

Experience Level: Beginner, no prior experience needed

In this class, you will learn how to safely use the Jointer, Table Saw, Band Saw, Planer, Router and various sanders. The project you will create while learning safe operating skills with these basic woodworking machines will be an elegant serving tray. Elements of joinery, design, wood selection and finishing will be part of your hands on woodworking experience.



Register here: https://paramountarts.org/event/introwoodworking_042023/

CMWA—2023 EVENT SCHEDULE

March 15 - Meeting

April 6 - Open shop

April 10, 17, 24 - JOY OF WOODWORKING CLASS

April 11 - Open shop

April 19 - Meeting

May 4 - Open shop

May 9 - Open shop

May 17 - Meeting

Jun 1 - Open shop

June 13 - Open shop

June 21 - Meeting

July 6 - Open shop

July 11 - Open shop

July 19 - Meeting

August 3 - Open shop

August 8 - Open shop

August 16—Meeting

September 7 - Open shop

September 12 - Open shop

September 20 - Meeting

October 5 - Open shop

October 10 - Open shop

October 18 - Meeting

November 2 - Open shop

November 14 - Open shop

November 15 - Meeting

December 7 - Open shop

December 12 - Open shop



FREE 284-Page
Woodworking Tools Catalog

For a free copy, call or click here.
1-800-683-8170 www.leevalley.com
Lee Valley & Veritas

**Simonson
Lumber**

127 6TH AVE N.,

**BE PART OF OUR GROUP BY
ADVERTISING WITH US!**

cmwa.member@gmail.com

for advertising opportunities on our webpage

Huge assortment of cabinet and furniture hardware in stock.
Over 12,000 items!

Titebond Adhesives Abrasives Clamps
Hinges Slides Decorative Hardware

Toll Free: 1-800-583-0130
24 hr. Fax: 1-888-811-9850
Web: www.wwhardware.com
Email: info@wwhardware.com

Call for our FREE 624 page specification catalog
Woodworker's Hardware
PO Box 180, Scuk Rapids, MN 56379
NOTE: All orders will be shipped Speedee or UPS



Central Minnesota Woodworkers Association
c/o Paramount Center for the Arts
913 West St. Germain Street
St. Cloud MN 56301

2023 ANNUAL MEMBERSHIP RENEWAL

By becoming a member of The Central Minnesota Woodworkers Association, you can take advantage of these benefits!

- ◆ Monthly Educational Meetings
- ◆ Networking with area woodworking enthusiasts
- ◆ Guest Speakers and Seminars
- ◆ Discounts at retailers & mail catalogs
- ◆ Our monthly newsletter by email
- ◆ An ability to ask questions of members through the CMWA web Site

Existing Member Name: Name _____

Any changes to Address, Phone or Email ? _____

New Member Name: _____

Address : _____

Phone : _____

Email: _____

2023 Dues Renewal: \$30

Donations: (Any amount is appreciated) \$ _____

We are a volunteer club.
A little help from all of us makes it all easier!

Check out our Web Site for Club Meetings and topics

www.TheCMWA.com